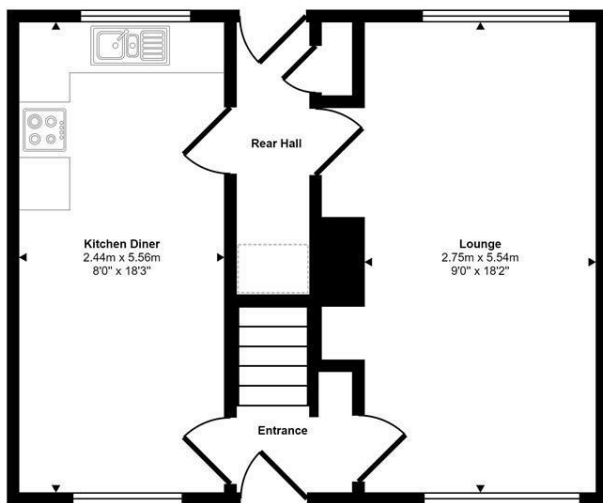




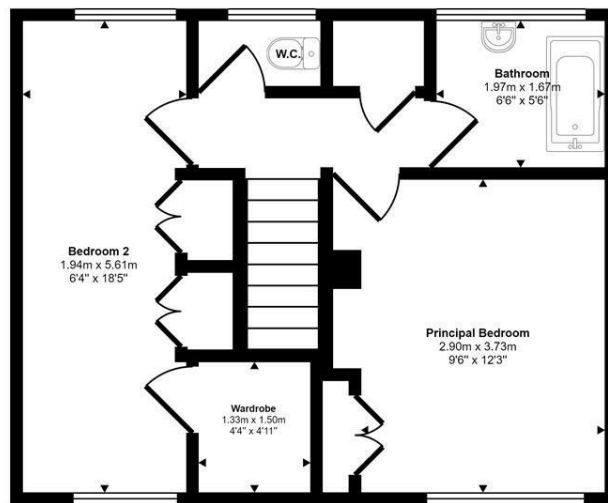
Ormesby Road | | NR10  
Guide Price £200,000

abbotFox

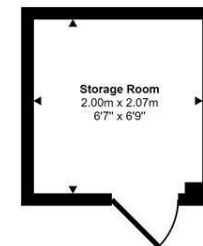
Approx Gross Internal Area  
81 sq m / 873 sq ft



Ground Floor  
Approx 38 sq m / 410 sq ft



First Floor  
Approx 39 sq m / 418 sq ft



Storage Room  
Approx 4 sq m / 45 sq ft

Denotes head height below 1.5m

This floorplan is only for illustrative purposes and is not to scale. Measurements of rooms, doors, windows, and any items are approximate and no responsibility is taken for any error, omission or mis-statement. Icons of items such as bathroom suites are representations only and may not look like the real items. Made with Made Snappy 360.

Energy Efficiency Rating		
	Current	Potential
Very energy efficient - lower running costs		
(92 plus) <b>A</b>		
(81-91) <b>B</b>		
(69-80) <b>C</b>		
(55-68) <b>D</b>		
(39-54) <b>E</b>		
(21-38) <b>F</b>		
(1-20) <b>G</b>		
Not energy efficient - higher running costs		
<b>England &amp; Wales</b>		EU Directive 2002/91/EC

Disclaimer – In accordance with the Property Misdescriptions Act, the company gives notice that all descriptions, references to condition, necessary permissions for use and other details are given in good faith and believed to be correct, but any intending lessees do not rely on them as statements of fact, but must satisfy themselves by inspection or other means, as to their accuracy.



abbotFox presents this spacious two bedroom end terraced house. Set within the popular area of Badersfield, this home is ideally located within easy reach of local amenities.

The accommodation is neatly arranged over two floors, with the ground floor comprising, an entrance hall, lounge and kitchen diner. The first floor offers two generous double bedrooms, a family bathroom and separate WC. Externally the rear gardens afford a high degree of privacy and benefit from a brick-built secure out-building.

The property could make an ideal investment opportunity with a tenant in situ, or would suit a first time buyer looking to take their first steps onto the property ladder. An internal viewing comes highly recommended.

Guide price - £200,000 - £210,000

